

Grasso S-61 / SB-6BK (screw)

Specifications

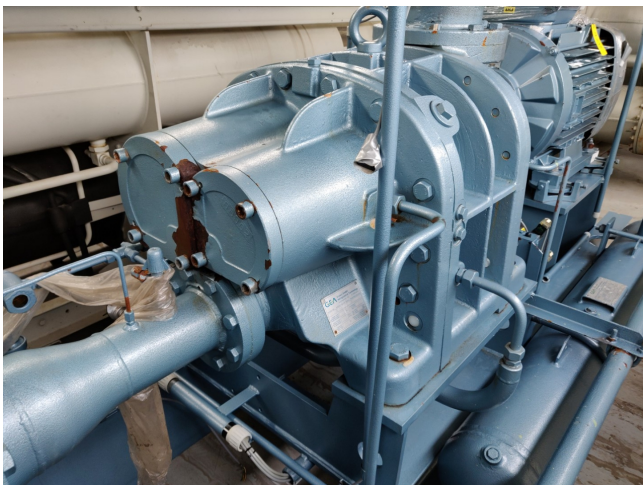
Merk	Grasso
Type	S-61 / SB-6BK (screw)
Koudemiddel	NH 3 (ammonia)
kW at -10°C/+40°C	290*
Elektromotor Specs	90
Opmerkingen	*Capacity based on -10°C/+38°C with 90 kW / 2950 RPM Electro
Gewicht in kg.	3450
Package / Rack	✓
Afmetingen	3450x2000x1540 mm (LxWxH)
Stock	1



Description

Used Grasso S-61 / SB-6BK (screw)

Used, well maintained Grasso / GEA SB-6BK Ammonia Nh3 screw refrigeration package (skid). Compressor s-61 (Serial - S0309/409441) . Consisting of all necessary components (see all pictures attached). Our capacity table is based on ammonia NH3. For all the other specs, see the picture of the manufacturer model plate or the attached pdf file (if available). *Why choose for HOSBV? Were not only the largest used refrigeration specialist in Europe, but also, we deliver all equipment including an extensive test, warranty and industrial cleaning. *Optional we can also perform a new paint job and arrange the logistics.



GEA Grasso GmbH Refrigeration Technology			
Holzhauser Str. 165 D-13509 Berlin			
Typ/Type/Type	Serien-Nr./Serial No./N° de série		Baujahr/Built in/An.constr.
S-61	S0 309/409441		1998
zulässiger Druck Allowable pressure Pression admissible	28	bar	Vol.Verhältnis Vol. Ratio Rapp. vol.
geom. Volumen Geometric volume Vol. géométrique	731.3	cm³/U cm³/rot	max. Drehz. Max. speed Max. vitesse
Leergewicht Weight empty Poids à vide	96 0	kg	3600 1/min rpm tr/min
		Arbeitsmedium Working fluid Fluide utilisé	Kältemittel Refrigerant Frigorigène

GEA Grasso LD 2			
Grasso GmbH Refrigeration Technology Holzhauser Straße 165 • 13509 Berlin • Germany Phone: +49 (0)30 - 43 592 6 • Fax: +49 (0)30 - 43 592 777			
Typ / Type / Type	Serien-Nr. / Serial No. / N de série	Baujahr / Built in / An. constr.	Leergewicht/Weight empty/Poids à vide
SB-6BK	7362	1998	3450 kg
zulässiger Betr. Überdruck Max. working pressure Supr. service adm.	23	bar	Kältemittel Refrigerant Frigorigène
		NH3	Volumenstrom Flow rate Débit
		1290	m³/h

GEA Grasso GmbH Refrigeration Technology			
Holzhauser Str. 165 D - 13509 Berlin			
Typ / Type / Type	Serien-Nr./Serial No./N° de série	Baujahr/Built in/An. constr.	Leergew./Weight/Poids à vide
200/1500/2	8.0725 920-01	1998	136 kg
zul. Betr. Überdruck max. working press. supr. service adm.	23	bar	zul. Betr. Temp. perm. working temp. temp. ds serv. adm.
Druckraum I Press. space I Comp. de press.I	23	bar	0-6 °C
Druckraum II Press. space II Comp. de press.II	23	bar	0-10 °C
		Inhalt Capacity Capacité	Medium Fluid Milieu
		13	NH3/R22
Baumusterkennzeichen/Design mark/ Marque de l'exécution Hersteller/Manufacturer/Producteur			AEL

